



# 400 SERIES

## PAINT BOOTH LIGHTING

DATE: _____	PROJECT MGR: _____
JOB: _____	
CAT#: _____	
TYPE: _____	



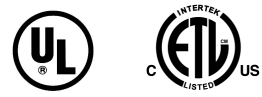
- TASK ①
- PAINTBOOTH ②**
- VAPOR DUST ③
- VAPOR ④
- WET DAMP ⑤
- MARINE ⑥
- EXPLOSION PROOF ⑦
- HID ⑧
- INSPECTION ⑨
- PORTABLE LIGHTING ⑩
- MOUNTING ⑪
- PHOTOMETRY ⑫
- LAMPS BALLASTS ⑬
- INFO ⑭
- CUSTOM ⑮
- ASK THE EXPERT ⑯

### DESCRIPTION

The 400 Series Rear Access product is an ideal paint spray booth product when a rear access fixture is desired. The 400 Series is also a Vapor proof product with an ETL listing of Class I Division 2 rating. This series now has 2' fixture as well as the 4' fixture cataloged. The 4' fixture comes in 2, 4 & 6 lamp T8 32W, T8HO 44W, & T5HO 54W lamps. The 2' - 3 lamp fixture uses (3) T8 17W lamps.

### SPECIFICATIONS

- LISTINGS:** Meets UL 844 Standards for Hazardous Locations.  
 Meets NFPA 33 Standards for Spray Applications using Flammable or Combustible Materials.  
 ETL listed for U.S. and Canada  
 Class I Division 2 Groups A,B,C,D  
 T3C (160 degree C) Operating Code  
 Class II Division 2 Groups F,G  
 T3C (160 degree C) Operating Code  
 Listed for locations having deposits of readily combustible paint residues.  
 UL Class I Division 2 Groups A,B,C,D for the 421 & 441 series T8 32W only.
- FEATURES:** Piano hinged rear access fixture - easy relamping.  
 Telescopic/Spring loaded lamp holders
- HOUSING:** 20 gauge enclosed & gasketed steel construction with white baked enamel finish which creates a durable, highly reflective finish.
- LENS:** 3/16" Clear tempered glass.
- ELECTRICAL:** 120-277 Volt universal ballast  
 347 Volt ballast available in the  
 T8 32W 4' - 2 & 4 lamp fixtures  
 T8 17W 2' 3 lamp fixtures
- APPLICATIONS:** Paint Spray Booth lighting.  
 Vapor Proof Applications
- OPTIONS:** **All Options Ordered Separately**  
 5901: 8 Ft. 3-wire whip





# 400 SERIES

## PAINT BOOTH LIGHTING

### PART NUMBERS

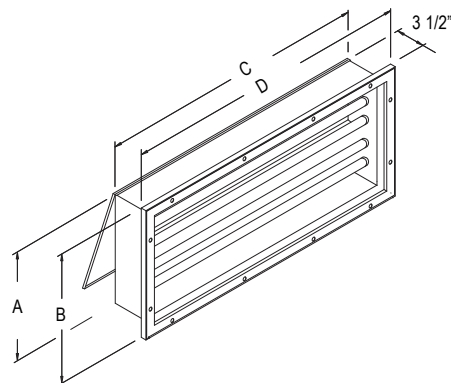
TASK	Series	Watt	Lamp Qty	Hub	Order #	3546	3613	3792	3794	3265	5420	3546	3125	1744	1766	4157	3792	4843	5421	
1 PAINTBOOTH	390231 (2 ft. 3 lamp)	17W T8	3	1/2" NPT	390231	3546	120-277 Volts 50/60 Hz													
3 VAPOR DUST	390421 (4 ft. 2 lamp)	32W T8	2	1/2" NPT	390421	3613	120-277 Volts 50/60 Hz													
			2	1/2" NPT	390421347	3276	347 Volts 60 Hz													
4 VAPOR		32W T8HLO	2	1/2" NPT	390421120	1744	120 Volts 50/60 Hz													
			2	1/2" NPT	390422771	1766	277 Volts 50/60 Hz													
5 WET DAMP		44W T8HO	2	1/2" NPT	390421120	4156	120 Volts 60 Hz													
			2	1/2" NPT	390421277	3794	277 Volts 60 Hz													
6 MARINE		54W T5HO	2	1/2" NPT	390421	3265	120-277 Volts 50/60 Hz													
			2	1/2" NPT	390421	5420	347-480 Volts 50/60 Hz													
7 EXPLOSION PROOF	390441 (4 ft. 4 lamp)	32W T8	4	1/2" NPT	390441	3546	120-277 Volts 50/60 Hz													
			4	1/2" NPT	390441347	3125	347 Volts 60 Hz													
8 HID		32W T8HLO	4	1/2" NPT	390441120	1744	120 Volts 50/60 Hz													
			4	1/2" NPT	390441277	1766	277 Volts 50/60 Hz													
9 INSPECTION		44W T8HO	4	1/2" NPT	390441120	4157	120 Volts 60 Hz													
			4	1/2" NPT	390441277	3792	277 Volts 60 Hz													
10 PORTABLE LIGHTING		54W T5HO	4	1/2" NPT	390441	4843	120-277 Volts 50/60 Hz													
			4	1/2" NPT	390441	5421	347-480 Volts 50/60 Hz													
11 MOUNTING	390461 (4 ft. 6 lamp)	32W T8	6	1/2" NPT	390461	3546	120-277 Volts 50/60 Hz													
			6	1/2" NPT	390461347	3125	347 Volts 60 Hz													
12 PHOTOMETRY		32W T8HLO	6	1/2" NPT	390461120	3124	120 Volts 50/60 Hz													
			6	1/2" NPT	390461277	3277	277 Volts 50/60 Hz													
13 LAMPS BALLASTS		44W T8HO	6	1/2" NPT	390461120	4157	120 Volts 60 Hz													
			6	1/2" NPT	390461277	3792	277 Volts 60 Hz													
14 INFO		54W T5HO	6	1/2" NPT	390461	3265	120-277 Volts 50/60 Hz													
			6	1/2" NPT	390461	5420	347-480 Volts 50/60 Hz													



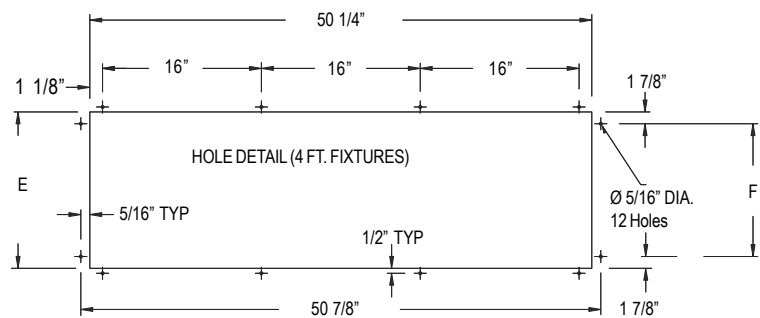
LAMPS SOLD SEPARATELY (Multiple voltages available, consult factory)

### DIMENSIONS

Mounting - See Page 11.8



MODEL	FIXTURE DIMENSIONS				MOUNTING DIMENSIONS	
	A	B	C	D	E	F
390421	10"	12 1/2"	50"	52 3/8"	10 3/4"	7"
390441	15"	17 1/2"	50"	52 3/8"	15 3/4"	12"
390461	20"	22 1/2"	50"	52 3/8"	20 3/4"	17"



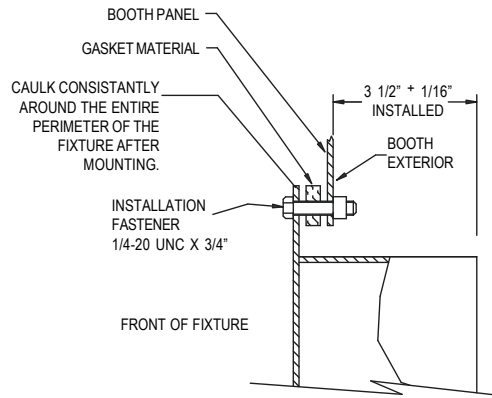
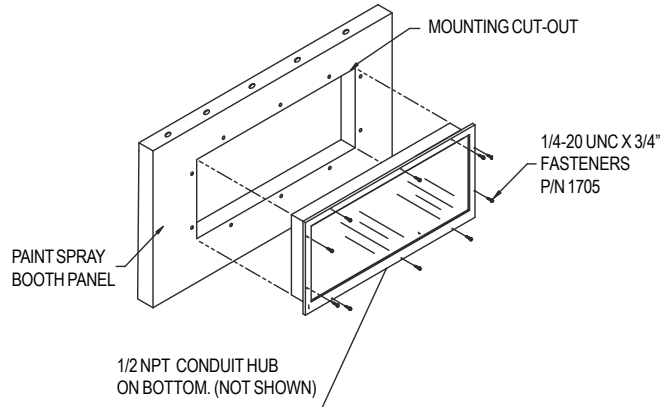


# MOUNTING

FOR LDPI, INC. FIXTURES

## 400 Rear Access Series

- ① TASK
- ② PAINTBOOTH
- ③ VAPOR DUST
- ④ VAPOR
- ⑤ WET DAMP
- ⑥ MARINE
- ⑦ EXPLOSION PROOF
- ⑧ HID
- ⑨ INSPECTION
- ⑩ PORTABLE LIGHTING
- ⑪ MOUNTING**
- ⑫ PHOTOMETRY
- ⑬ LAMPS BALLASTS
- ⑭ INFO
- ⑮ CUSTOM
- ⑯ ASK THE EXPERT



MOUNTING HOLE DIMENSIONS

